



Travel by soil to silk

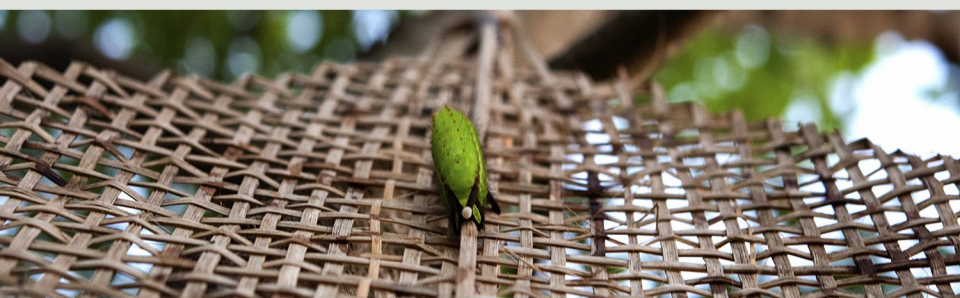
What is Soil to Silk Tour?

One can walk amidst trees to witness rearing of silk worms to reeling yarns up to weaving of exotic Muga & Eri silk of Assam at Marvella Paam. Sualkuchi being one of the largest weaving clusters in the world has the privilege to gather the rearers, reelers, weavers, craftsmen who are constantly working towards preserving silk culture and our handloom heritage. Marvella Paam located in silk village Sualkuchi is a one roof experience platform from art of creating silk from nature until weave a silk fabric.

What can you experience?

One can experience rearing of silk worms to reeling and to weaving exotic silk amidst natural landscape. Serene village life blended with various traditions is a major attraction of our tour plan

Our beautiful lush green surroundings is breathtaking, and our thoughts and work is shaped by its beauty. And as the saying goes 'Just being surrounded by bountiful nature, it rejuvenates and inspires us' -we create magic in our work by being amidst nature. Once you visit this place, it will remain in your hearts, forever!



Handloom tour by Marvella



The day filling activities:

- >Showing Host plants for Muga & Eri Silkworm
- >Lifecycle demonstration of Muga & Eri silkworms
- >Experience handloom weaving
- >Interaction with weaver, craftsman
- >Display of designer attires & fabrics
- >Bamboo craft making
- >Bee-keeping demo
- >Farm walk/ walk through villages
- >Serving ethnic lunch
- >End the handloom with folk music & monastic dance (Bodo dance/Bihu/Bhawna performance/ Kholplay / Satriya etc)

“HANDLOOM TOUR ”AT MARVELLA PAAM, SUALKUCHI

Itinerary for Full Day Handloom Tour – (Duration: 6:00 Hrs)

| Time | Activity |
|----------|------------------------------------------------------------------------------------------------------------------|
| 10.30 am | Welcome Drinks |
| 11.00 am | Live Muga Reeling/Pre handloom processes/Weaving experience & Hand woven Products display. Interact with weavers |
| 1.00 pm | Ethnic Lunch |
| 3.00 pm | Monastic Dance(Bagurumba/Bihu/Satriya/Bhowna/Kholplay etc) |
| 3.30 pm | Ended with tea n snacks |

Itinerary for Half Day Handloom Tour – (Duration: 01:30-2.00 Hrs)

| | |
|------------|-------------------------------------------------------------------------------------|
| | Welcome Drinks |
| 15 Minutes | Farm Tour (Showing Muga Silkworm Host plant etc) |
| 45 Minutes | Live Muga Reeling/Pre handloom processes/Weaving Experience. Interact with weavers. |
| 30 Minutes | Hand woven Products display |
| 15 Minutes | Tea n snacks |
| 40 Minutes | *Monastic Dance (Optional) |



Collaborating weaving culture with Textile Tourism

The food menu (Traditional) is as follows:

Welcome Drinks: Local fruits Juice

- Lunch :**
- : Steam Rice (Joha Rice)
 - : One Mix Yellow Dal (Home Style)
 - : One Leafy Vegetable Fry (Grown by Our Firm)
 - : One seasonal mix of vegetables
 - : Traditional red lentil sour *curry (Bor Tenga Curry)
 - : Mashed potatoes
 - : Smoked/roasted brinjal and tomatoes
 - : Green Salad with Assam Lemon
 - : A special green chutney from Marvella
 - :A fish curry with elephant apples (Assamese style)
 - : Black sesame seeds with chicken curry (Assamese style)
- (*All Curry can be customised according to our traditional style with or without potatoes subject to availabilities of ingredients)

- Snacks:**
- : Red/Milk Tea
 - : Rice wrapper and sesame jiggery filling & Coconut Ladu (Assamese Pitha and Ladu)

We would love to design your day for Handloom tour. Please contact us.



Weaving
Farming
Tourism